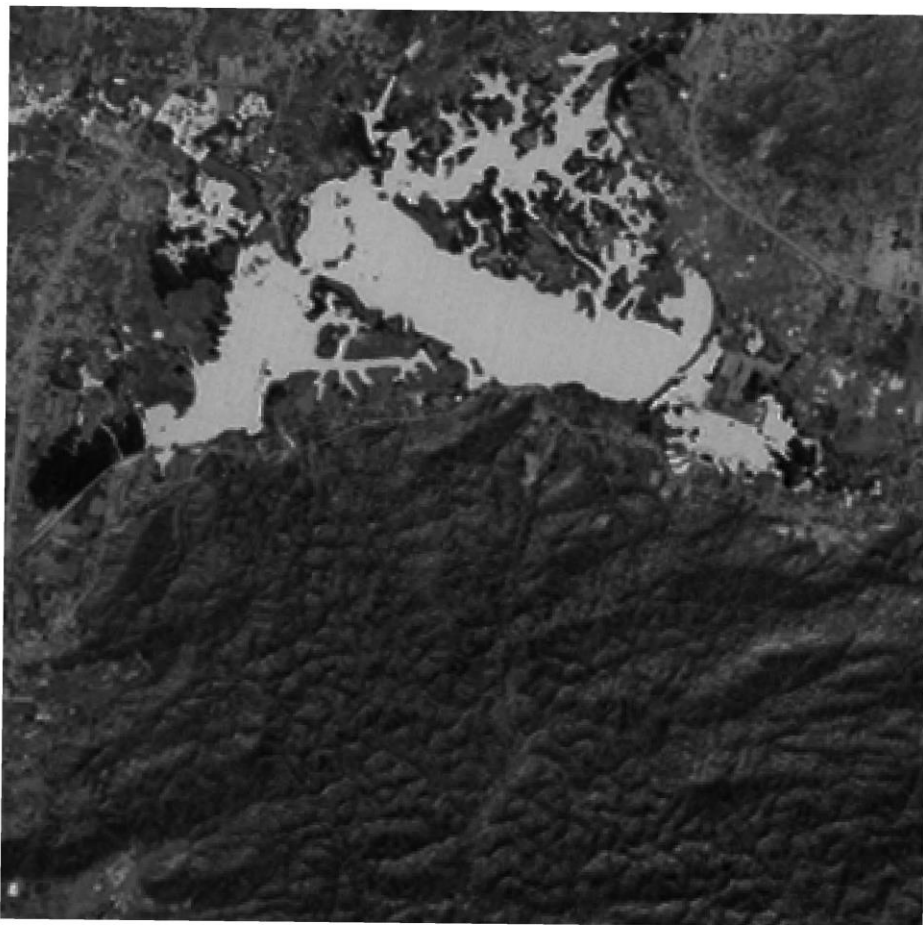


DEEPOR BEEL, ASSAM NDWI NOVEMBER 2011



0.75 0 0.75 1.5 km



DEEPOR BEEL, ASSAM

NDWI NOVEMBER 2011

■ -0.614458
□ 0.6

Map description and analysis

Introduction:

NDWI (Normalized Difference Water Index) is the method to Highlight the Water Bodies on the Satellite Image. It uses Green and NIR (Near Infrared) Band to calculate the NDWI. The Image shows Deepor Beel Lake in November 2011.

Green Band:

- It shows the highest reflection of Water Bodies, in a Spectral Signature Curve of Water.
- Other Features have Less Reflectance compared to NIR Band.

NIR Band:

- It shows the lowest or no reflection of Water Bodies in the Spectral Curve of Water.
- Other Features have High Reflectance compared to Green Band.

Formula:

- $NDWI = (Green\ Band - NIR\ Band) / (Green\ Band + NIR\ Band)$.

Conclusion:

The Map highlights the areas with Water, in this case the Lake. The Bright part in the image shows the value that goes from 0 to +1 and shows the water, and the Dark part in the image shows the value that goes from 0 to -1 and shows the other features than Water.

Team Members:

Bhola Mahto
Saurav Deka
Surabhi Tamang

Team Name: BIT Ranchi

Topic: Choose Your Own Topic

Team lead: Palash Chowdhary

Organization: BIT Mesra, Ranchi

Contact/email: palash2907@gmail.com